

RELIANCE PTX

RDG für flexible Endoskope



Technische Informationen und Daten

- Durchreiche-Reinigungs- und Desinfektionsautomat für flexible Endoskope
- Kapazität: pro Waschzyklus 2 flexible Endoskope
- Innenreinigung der Endoskope durch Einzelkanalanschluss jedes Endoskops, Außenreinigung der Endoskope durch rotierende Sprüharme
- Freie Chemieauswahl. Entsprechend den unterschiedlichen europäischen Normen können Peressigsäure- oder Glutaraldehyd-Desinfektionsmittel sowie enzymatische und alkalische Reinigungsmittel eingesetzt werden
- Aufnahmemöglichkeit von bis zu drei 5ltr-Gebinden im Maschinensockel in isolierter Chemikalienkammer
- Kapazitive Leerstandsanzeige für Chemikalienbehälter

RELIANCE PTX

RDG für flexible Endoskope



- Geeignet zur “side by side” - Installation mehrerer Maschinen zur Rein/Unrein-Trennung, Wartungszugang über Unreinseite
- Geringer „Footprint“: Kompakte Maße von B800xT725mm ermöglichen maximale Ausnutzung bei begrenztem Platzbedarf
- Die Klapptüren dienen als Arbeitsfläche für das Be- und Entladen der Endoskope
- Der Anschluss der Endoskope erfolgt außerhalb der Waschkammer in ergonomisch günstiger Arbeitshöhe
- Blockadeüberwachung für bis zu 7 Endoskopkanäle inklusive der Erkennung von eingeschränktem Durchfluss sowie Kanalanschlusskontrolle
- Automatischer Dichtigkeitstest und Druckhaltung vor und während des gesamten Waschzyklus
- Vollständige unabhängige Überwachung der wichtigsten Zyklusparameter (Zeit, Temperatur, Menge der Reinigungs- und Desinfektionsmittel, Wassermenge, Durchfluss durch Kanäle und Leitfähigkeit [optional])
- Hinterlegung der Durchflusseigenschaften jedes Endoskopes in der Datenbank
- Identifikation des Endoskops über Touchscreen-Bedienung oder optional über Barcodeleser
- Große Fenster auf Unrein- und Reinseite des Gerätes mit integrierten LED-Leuchten
- Zur vereinfachten Nutzung wird der Zyklusstatus, der durch farbige LED angezeigt wird, sowohl auf der reinen als auch auf der unreinen Seite angezeigt
- Der Zyklusfortschritt wird auf einem großen farbigen Kontrollbildschirm angezeigt und in der integrierten Steuerung gespeichert
- Optional Bildschirm auf der Reinseite und Chargendrucker
- Optional Etikettendrucker auf Reinseite

RELIANCE PTX

RDG für flexible Endoskope



- Nachverfolgung aller Zyklusdaten, sowie Endoskop- und Bedieneridentifikation
- Möglichkeit zur Aufbereitung von 6 Nasoendoskopen pro Zyklus
- Möglichkeit zur Aufbereitung von TOE / TEE-Sonden
- Die Zyklusparameter und Leistungsmerkmale der Endoskope, welche im Servicemodus eingerichtet sind, sind vor Benutzeränderung geschützt
- Die Aufbereitungszeit des validierten Endoskop-Zyklus beträgt ca. 35-45 Minuten, einschließlich Waschen, Spülen, Desinfizieren und durchblasen der Innenkanäle des Endoskops mit medizinischer Druckluft. (abhängig von der Wasserqualität und den verwendeten Endoskopen)
- Vorprogrammierter thermischer Selbstdesinfektionszyklus (Ao-Wert = 3000)
- Leitfähigkeitsmessung des Schlusspülwassers optional
- Abwasserkühlung optional
- Kanalanschlussstücke für alle flexiblen Endoskope
- Anschluss an KW, WW, VEW, medizinische Druckluft und Strom
- Abluftanschluss und Standardabfluss erforderlich

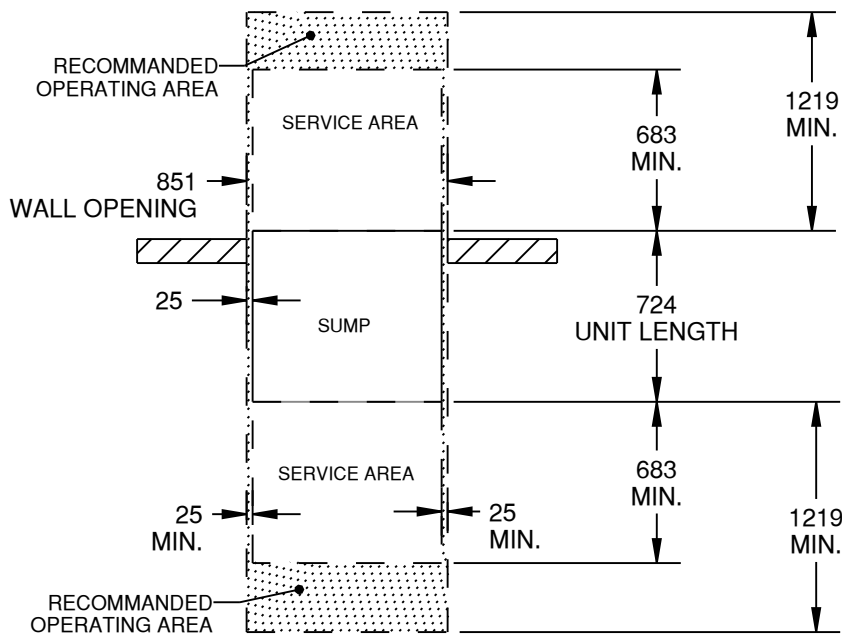
RELIANCE PTX

RDG für flexible Endoskope



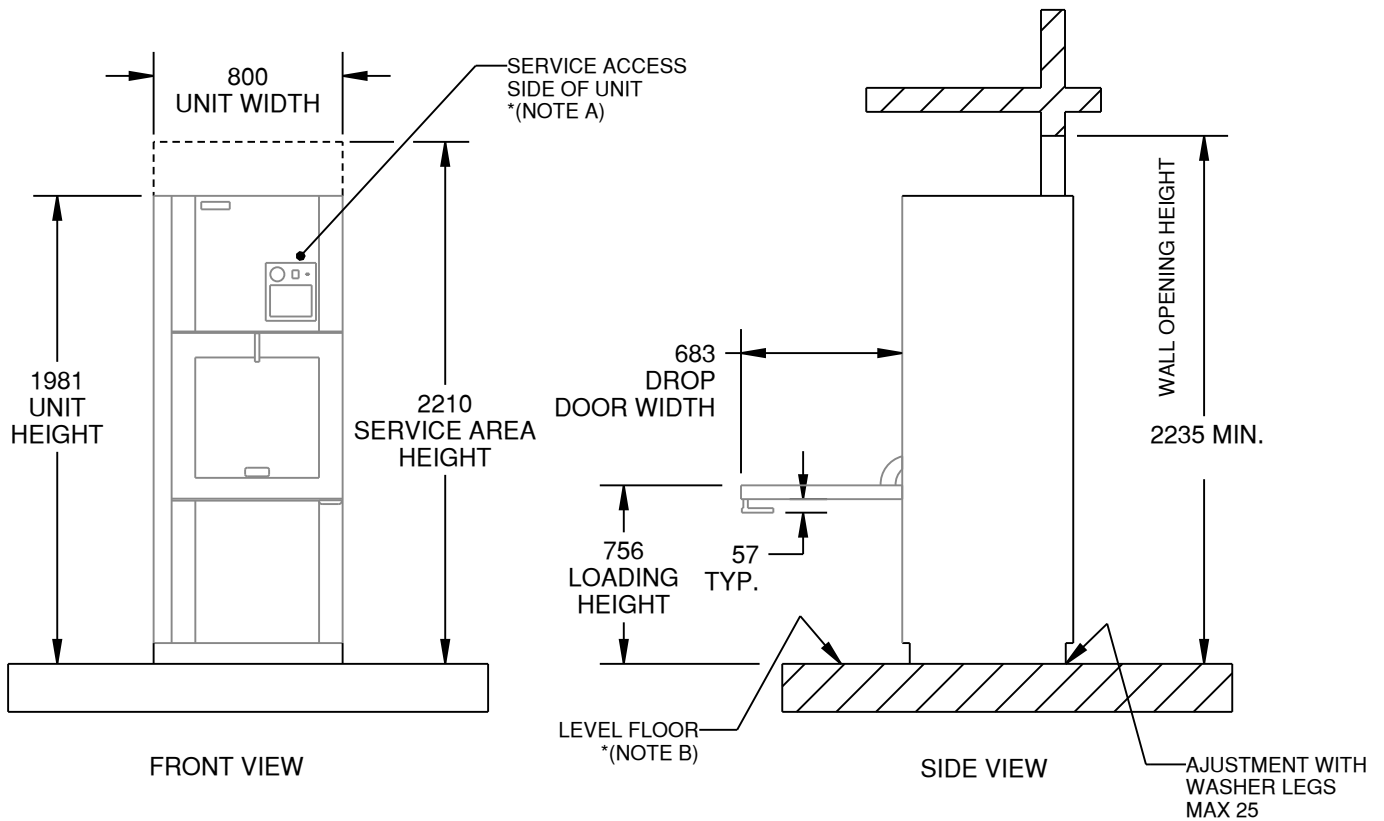
Richtlinien und Normen

- Vollständige CE-Kennzeichnung gemäß Medizinprodukterichtlinie, den elektrischen, elektromechanischen Sicherheitsstandards
- Medizinprodukte-Richtlinie 93/42 / EWG - 2007/47 / EG und Maschinenrichtlinie 2006/42 / EG
- Leistung: EN ISO 15583-1: 2009 & EN ISO 15883-4-2009 (oder zukünftige Revisionen)
- Risikomanagement: EN ISO 14971: 2012
- Sicherheit: EN ISO 61010-1 & EN ISO 61010-2-040
- Software: IEC 62304
- EMC Richtlinie 2004/108/EC
- Leistung: EN ISO 61326 & CISPR 11:2009/A1:6100
- RoHS Richtlinie 2011/65/EU & EN 50581:2012
- Hergestellt in Kanada nach einem ISO 9001 & ISO 13485 genormten Qualitätsmanagementsystem



TOP VIEW

TYPICAL INSTALLATION
(FLUSH WALL)



NOTES:

- (A) SERVICE ACCESS IS ON THE LOAD SIDE. ELECTRICAL AND CONTROL COMPONENTS, AS WELL AS MOST OF SERVICABLE PARTS ARE ACCESSIBLE FROM THAT SIDE OF UNIT.
- (B) CUSTOMER MUST BE SURE THAT MACHINE STANDS ON A NON-COMBUSTIBLE FLOOR.



T
I
T
L
E

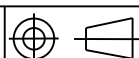
EQUIPMENT DRAWING OF
RELIANCE PTX ENDOSCOPE PROCESSING SYSTEM

ELECTRIC HEATED, VENTED

STATE
Released

SIZE:
A

SCALE:
3/128



DRAWN BY:
Mario Grondin

DRAWING NUMBER:
10203166

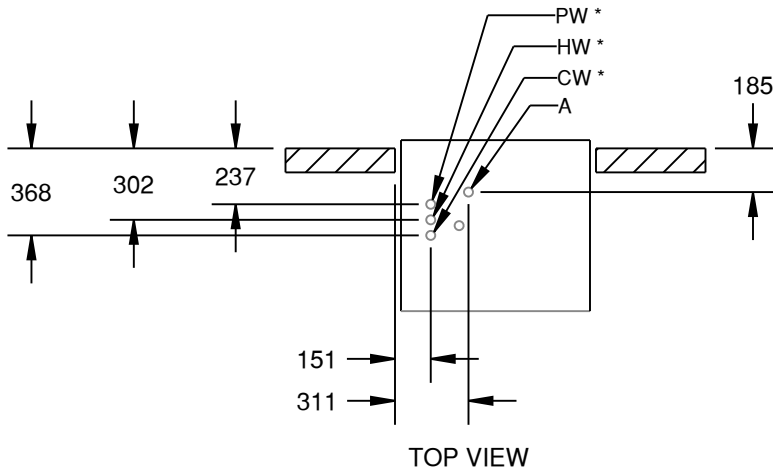
PART NUMBER:
10203166

REVISION:
B

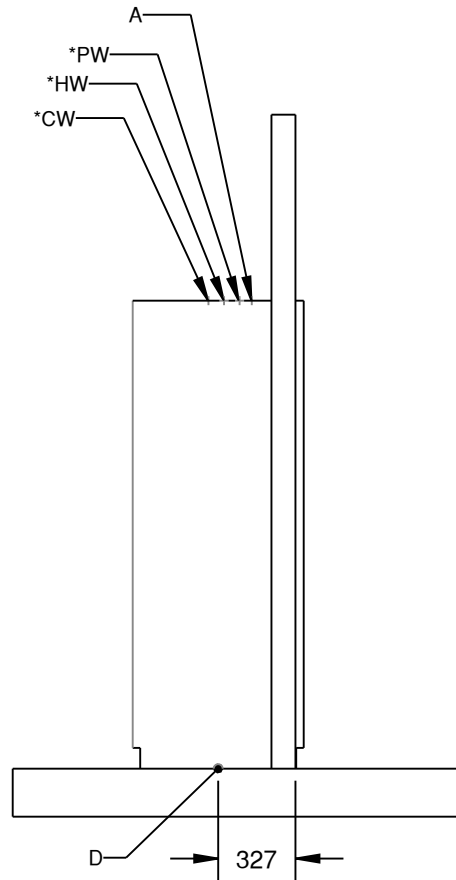
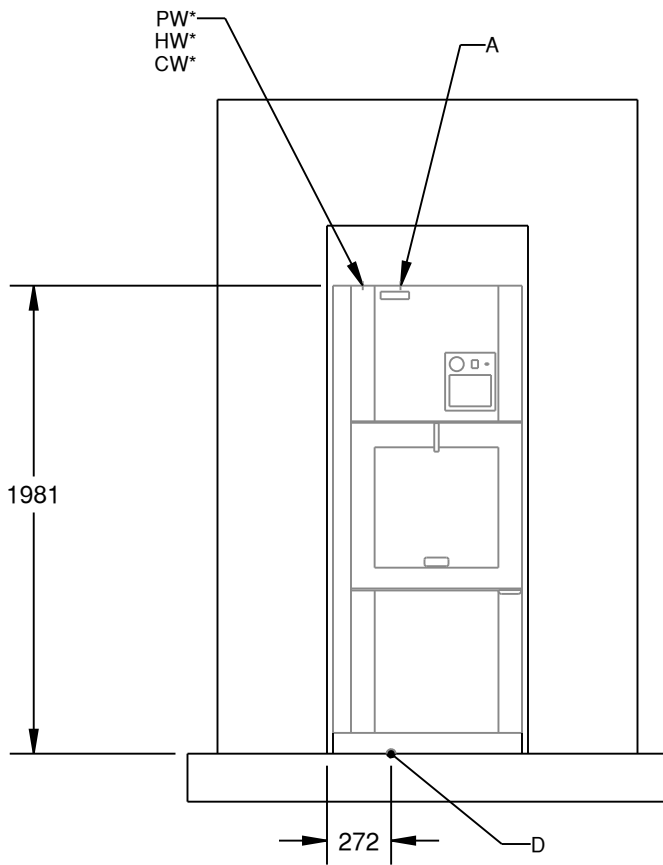
This document contains confidential and proprietary information of STERIS Corporation. Neither this document nor the information herein are to be reproduced, either in part or in whole, except as specifically authorized by STERIS Corporation.

SHEET
1 OF 9

UTILITY (PLUMBING) CONNECTION POSITION



HW	HOT WATER *
CW	COLD WATER *
PW	PURE WATER *
A	COMPRESSED AIR
D	FLOOR DRAIN LOCATION



TITLE

EQUIPMENT DRAWING OF RELIANCE PTX ENDOSCOPE PROCESSING SYSTEM

ELECTRIC HEATED, VENTED

STATE Released

SIZE: A	SCALE: 3/128		DRAWN BY: Mario Grondin	DRAWING NUMBER: 10203166	PART NUMBER: 10203166	REVISION: B
------------	-----------------	--	----------------------------	-----------------------------	--------------------------	----------------

This document contains confidential and proprietary information of STERIS Corporation. Neither this document nor the information herein are to be reproduced, either in part or in whole, except as specifically authorized by STERIS Corporation.

SHEET
2 OF 9

RELIANCE PTX ENDOSCOPE PROCESSING SYSTEM

UTILITY REQUIREMENTS CHART (PLUMBING)

UTILITY	PARAMETER	REQUIREMENT	✓	NOTES
HOT WATER (HW)	CONNECTION SIZE / TYPE	3/4 in MALE NPT (COMPATIBLE G3/4) / 1/2 in / FEMALE BSPT		1. STERIS REQUIRES TO INSTALL WATER HAMMER ARRESTOR, UNION & PRESSURE GAUGE. 2. CUSTOMER MUST PROVIDE UTILITY CONNECTIONS WITH SHUTOFFS DISCONNECTS WITHIN 2 FEET OF THE PERIMETER OF THE EQUIPMENT AND BELOW THE CEILING DECK. *STERIS OFFERS FLEXIBLE HOSES ACCESSORY (TBD) WITH INSTRUCTIONS. 3. BACK FLOW PREVENTER AGAINST BACK SIPHONAGE MAY BE REQUIRED (LOCAL PLUMBING CODE)
	PRESSURE RANGE	1.0 - 3.5 BAR DYNAMIC MAX. 6.0 BAR STATIC		
	OPERATING FLOW RATE	21.6 L/min TO 34.9 L/min		
	TOTAL CONSUMPTION PER ENDOSCOPE CYCLE	~ 20.0 L		
	TEMPERATURE RANGE	40°C TO 60°C		
	WATER QUALITY *(NOTE 4)	HARDNESS (CaCO ₃) : MAX. 210 ppm		
COLD WATER (CW) (NOTE 2)	CONNECTION SIZE / TYPE	3/4 in MALE NPT (COMPATIBLE G3/4) / 1/2 in / FEMALE BSPT		4. STERIS RECOMMENDS THE FOLLOWING WATER QUALITY PARAMETERS: TBD -COLD WATER AND HOT WATER PH: 5.5 - 8.0 -PURE WATER TOTAL VIABLECOUNT : MAX. 10 CFU/100mm -MYCOBACTERIA : NONE -PSEUDOMONAS : NONE -AERUGINOSA -LEGIONELLA : NONE -ENDOTOXIN : MAX. 0.25 EU/ml 5. ONLY REQUIRED FOR SELF-DISINFECTION CYCLE.
	PRESSURE RANGE	2.0-3.5 BAR DYNAMIC MAX. 6.0 BAR STATIC		
	OPERATING FLOW RATE	41.0 L/min TO 49.9 L/min		
	TOTAL CONSUMPTION PER ENDOSCOPE CYCLE	FOR SUMP FILLING 60.0 L FOR DRAIN COLLDOWN (OPTIONAL) NONE (NOTE5)		
	TEMPERATURE RANGE	25°C MAXIMUM		
	WATER QUALITY *(NOTE 4)	HARDNESS (CaCO ₃) : MAX. 210 ppm		
PURE WATER (PW)	CONNECTION SIZE / TYPE	3/4 in MALE NPT (COMPATIBLE G3/4) / 1/2 in / FEMALE BSPT		
	PRESSURE RANGE	2.0-5.0 BAR DYNAMIC MAX. 6.0 BAR STATIC		
	OPERATING FLOW RATE	12.8 L/min TO 24.9 L/min		
	TOTAL CONSUMPTION PER INSTRUMENT CYCLE *(NOTE 4)	40.0 L		
	TEMPERATURE RANGE	25°C MAXIMUM		
	RESISTIVITY (CONDUCTIVITY)	0.5-0.1 MΩ -cm [2-30 μS/cm]		
	pH	5.5 - 8.0		



TITLE

EQUIPMENT DRAWING OF RELIANCE PTX ENDOSCOPE PROCESSING SYSTEM ELECTRIC HEATED, VENTED

SIZE: A	SCALE: 3/128		DRAWN BY: Mario Grondin	DRAWING NUMBER: 10203166	PART NUMBER: 10203166	REVISION: B
------------	-----------------	--	----------------------------	-----------------------------	--------------------------	----------------

STATE Released
SHEET 3 OF 9

This document contains confidential and proprietary information of STERIS Corporation. Neither this document nor the information herein are to be reproduced, either in part or in whole, except as specifically authorized by STERIS Corporation.

RELIANCE PTX ENDOSCOPE PROCESSING SYSTEM

UTILITY REQUIREMENTS CHART (PLUMBING)

UTILITY	PARAMETER	REQUIREMENT	✓	NOTES
COMPRESSED AIR (A)	CONNECTION SIZE / TYPE	12mm OD PUSHIN CONNECTOR		1. COMPRESSED AIR SPECIFICATIONS -OIL FREE : MAX. 0.1 mg/m ³ -FILTRATION : 99.9% ARRESTANCE TO PARTICULES OF 0.2 µm AND LARGER -FREE OF LIQUID WATER -WATER VAPOR CONTENT : MAX.0.3 mg/L
	PRESSURE RANGE	MIN 4.0 BAR DYNAMIC MAX. 6.0 BAR STATIC		
	OPERATING FLOW RATE	MAX. 275 SLPM		
DRAIN (D)	CONNECTION SIZE / TYPE	51 mm OD		STERIS RECOMMENDS A 76 mm MINIMUM DRAIN
	OPERATING FLOW RATE	GRAVITY DRAIN : 115 L/min		



T
I
T
L
E

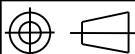
EQUIPMENT DRAWING OF RELIANCE PTX ENDOSCOPE PROCESSING SYSTEM

ELECTRIC HEATED, VENTED

STATE
Released

SIZE:
A

SCALE:
3/128



DRAWN BY:
Mario Grondin

DRAWING NUMBER:
10203166

PART NUMBER:
10203166

REVISION:
B

This document contains confidential and proprietary information of STERIS Corporation. Neither this document nor the information herein are to be reproduced, either in part or in whole, except as specifically authorized by STERIS Corporation.

SHEET
4 OF 9

RELIANCE PTX ENDOSCOPE PROCESSING SYSTEM

UTILITY REQUIREMENTS CHART (ELECTRIC)

UTILITY		PARAMETER AND REQUIREMENT			NOTES
		CONNECTION SIZE/TYPE	NOMINAL AMPERAGE	RECOMMENDED CIRCUIT	
ELECTRICITY (EL)	380/400/415V 50 Hz, 3-Ph	22, 28, 40 mm CONDUIT	18A	30A	1. ALL CONNECTIONS SHOULD BE IN ACCORDANCE WITH LOCAL CODES. 2. NEUTRAL WIRE REQUIRED. 3. ALWAYS FOLLOW LOCAL ELECTRICAL CODES AND SAFETY-RELATED WORK PRATICES TO DETERMINE THE VALUE OF PROTECTION. 4. WIRING ON THE EQUIPMENT TERMINATES AT THE ELECTRICAL BOX. WIRING BETWEEN ELECTRICAL BOX AND BUILDING SERVICE LINES ARE NOT SUPPLIED BY STERIS. 5. DISCONNECT SWITCHES WITH OFF POSITION LOCKOUT (SUPPLIED BY OTHERS) MUST BE INSTALLED IN ELECTRIC SUPPLY LINES NEAR THE EQUIPMENT.



T
I
T
L
E

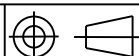
EQUIPMENT DRAWING OF RELIANCE PTX ENDOSCOPE PROCESSING SYSTEM

ELECTRIC HEATED, VENTED

STATE
Released

SIZE:
A

SCALE:
3/128



DRAWN BY:
Mario Grondin

DRAWING NUMBER:
10203166

PART NUMBER:
10203166

REVISION:
B

This document contains confidential and proprietary information of STERIS Corporation. Neither this document nor the information herein are to be reproduced, either in part or in whole, except as specifically authorized by STERIS Corporation.

SHEET
5 OF 9

RELIANCE PTX ENDOSCOPE PROCESSING SYSTEM

UTILITY REQUIREMENTS CHART

UTILITY	PARAMETER	REQUIREMENT	NOTES
VENTILATION EXHAUST (EX)	CONNECTION SIZE	76 mm OUTSIDE DIAMETER	1. STERIS REQUIRES CORROSION-RESISTANT AND WATER-TIGHT DUCT: - MIN OPERATING TEMPERATURE 210°F [99°C] - SLOPED TOWARDS DRAIN AND NO DEAD LEGS - INSTALL DRAIN PART AT LOWEST POINT NEAR UNIT 2. EXHAUST FAN NORMALLY OPEN-AUXILIARY CONTACTS IS AVAILABLE TO SUPPLY A SIGNAL TO THE FACILITY HVAC CONTROL SYSTEM WHENEVER THE WASHER VENTILATION EXHAUST FAN IS IN OPERATION.
	PRESSURE RANGE	-62 Pa (-50 to 75 Pa) AT CONNECTION	
	OPERATING FLOW RATE	85 m³/h	
	TEMPERATURE RANGE	MAX. 90°C	

PHYSICAL SPECIFICATIONS

SHIPPING DIMENSION W x H x L	965 mm x 2311 mm x 1041 mm	1. LEVELING FEET ARE PROVIDED FOR PROPER INSTALLATION. 2. PERMISSIBLE ENVIRONMENTAL CONDITIONS THIS EQUIPMENT IS DESIGNED TO GIVE OPTIMAL RESULTS UNDER THE FOLLOWING CONDITIONS: - INDOOR USE ONLY; - ALTITUDE OF OPERATION UP TO 2500 m; (WITH LOWER DISINFECTION TEMPERATURE AT HIGH ALTITUDE). - AMBIANT TEMPERATURE OF 5 to 40°C; - MAXIMUM RELATIVE HUMIDITY IS 80% FOR TEMPERATURE UP TO 88°F [31°C], DECREASING LINEARLY TO 50% RELATIVE HUMIDITY AT 40°C; - POLLUTION DEGREE 2: EQUIPMENT MUST BE INSTALLED IN AN ENVIRONMENT WHERE NORMALLY ONLY NON-CONDUCTIVE POLLUTION OCCURS BUT WHERE OCCASIONAL, TEMPORARY CONDUCTIVITY CAUSED BY CONDENSATION CAN BE EXPECTED (AS DETERMINED ACCORDING TO INTERNATIONAL STANDARD EN/IEC 61010-1). 3. STERIS ASSUMES NO RESPONSIBILITY FOR CHANGES MADE TO, OR FAILURE TO OBSERVE THE SPECIFICATIONS ON EQUIPMENT DRAWING AND NOTE PAGES. SPECIFICATIONS AND DESCRIPTIONS ARE SUBJECT TO CHANGE WITHOUT NOTICE.
SHIPPING WEIGHT	TBD	
OPERATING DIMENSION W x H x L	724 mm x 1981 mm x 800 mm	
OPERATING WEIGHT (WITH WATER AND FULLY LOADED)	TBD	
NOISE LEVEL: WEIGHTED EQUIVALENT SURFACE SOUND PRESSURE LEVEL	TBD db(A) CALCULATED AS DESCRIBED IN ISO 3746.	

	CONTINUOUS OPERATION			
	TYPICAL HEAT LOSS AT 24°C			
	CLEAN SIDE	SOILED SIDE	TOTAL	UNITS
VENTED UNIT	264	645	909	[W]
VALUES INCLUDE HEAT LOSS DURING DOOR OPENING FOR LOADING AND UNLOADING OPERATIONS.				



T
I
T
L
E

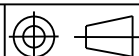
EQUIPMENT DRAWING OF RELIANCE PTX ENDOSCOPE PROCESSING SYSTEM

ELECTRIC HEATED, VENTED

STATE
Released

SIZE:
A

SCALE:
3/128



DRAWN BY:
Mario Grondin

DRAWING NUMBER:
10203166

PART NUMBER:
10203166

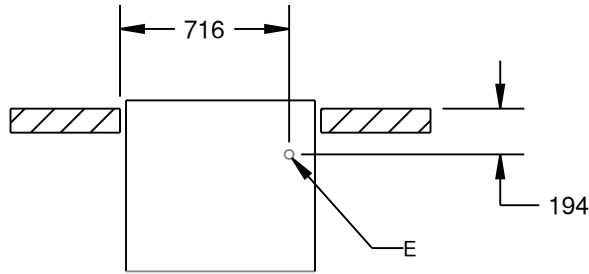
REVISION:
B

This document contains confidential and proprietary information of STERIS Corporation. Neither this document nor the information herein are to be reproduced, either in part or in whole, except as specifically authorized by STERIS Corporation.

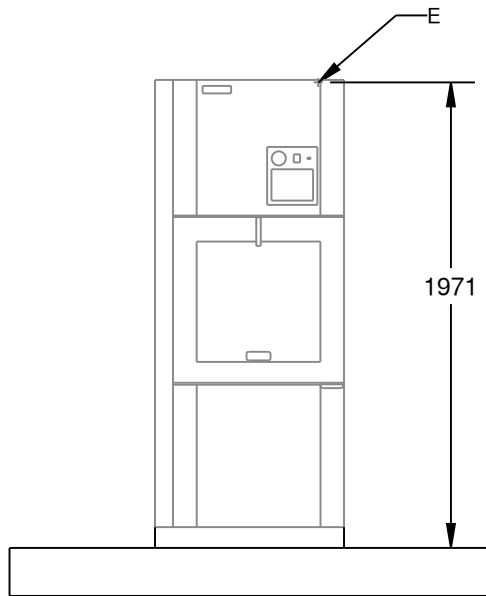
SHEET
6 OF 9

UTILITY (ELECTRICITY) CONNECTION POSITION

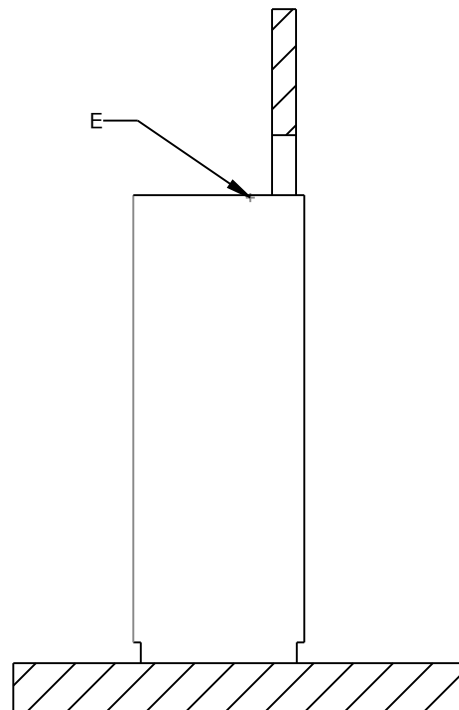
E	ELECTRICAL
---	------------



TOP VIEW



FRONT VIEW



SIDE VIEW



TITLE

EQUIPMENT DRAWING OF
RELIANCE PTX ENDOSCOPE PROCESSING SYSTEM

ELECTRIC HEATED, VENTED

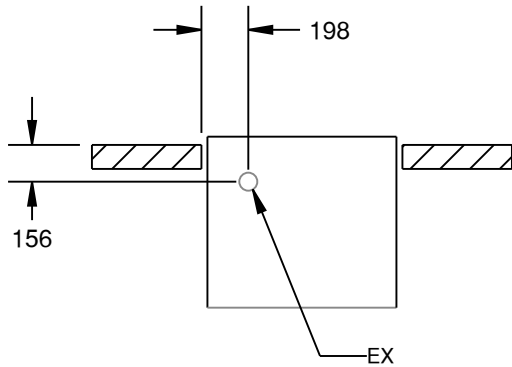
STATE Released

SIZE: A	SCALE: 3/128		DRAWN BY: Mario Grondin	DRAWING NUMBER: 10203166	PART NUMBER: 10203166	REVISION: B
------------	-----------------	--	----------------------------	-----------------------------	--------------------------	----------------

This document contains confidential and proprietary information of STERIS Corporation. Neither this document nor the information herein are to be reproduced, either in part or in whole, except as specifically authorized by STERIS Corporation.

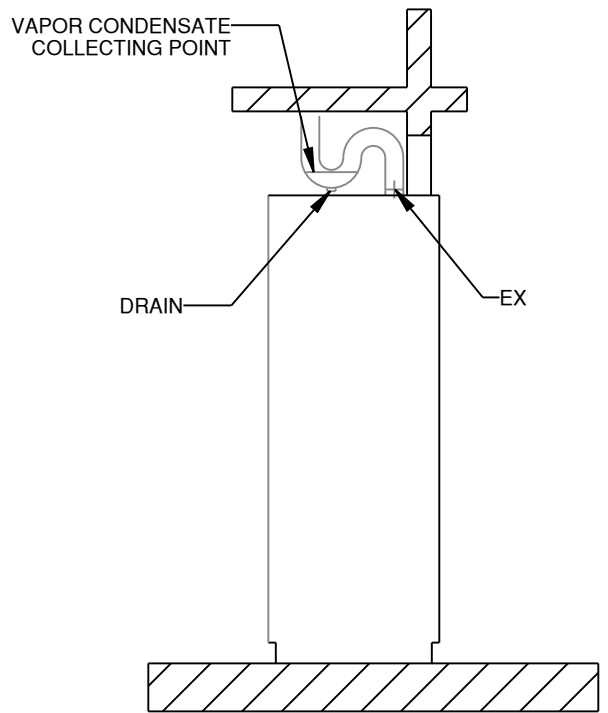
SHEET
7 OF 9

UTILITY (VENTILATION) CONNECTION POSITION

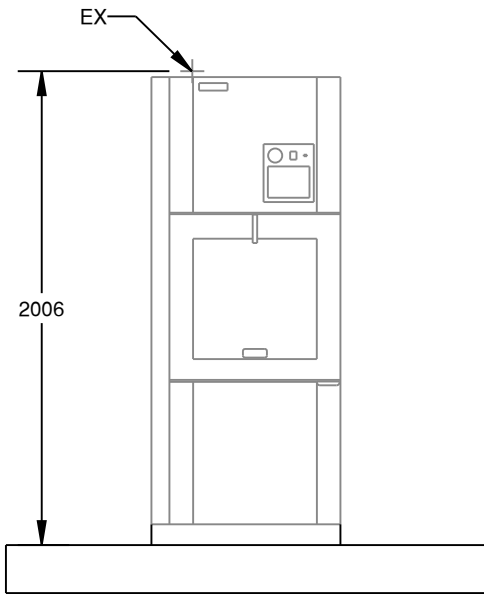


TOP VIEW

SUGGESTED DUCTWORK (BY OTHERS)



SIDE VIEW



FRONT VIEW



T
I
T
L
E

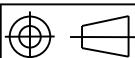
EQUIPMENT DRAWING OF RELIANCE PTX ENDOSCOPE PROCESSING SYSTEM

ELECTRIC HEATED, VENTED

STATE
Released

SIZE:
A

SCALE:
3/128



DRAWN BY:
Mario Grondin

DRAWING NUMBER:
10203166

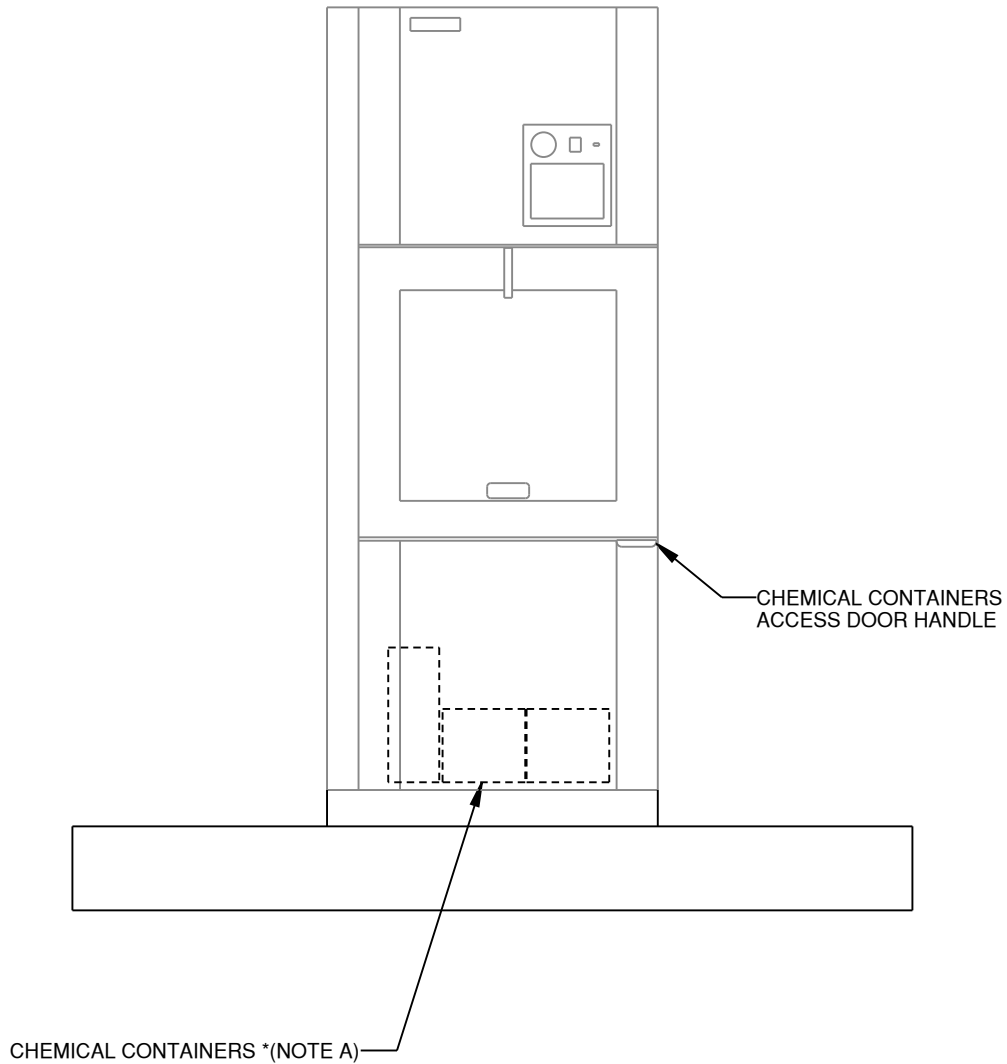
PART NUMBER:
10203166

REVISION:
B

This document contains confidential and proprietary information of STERIS Corporation. Neither this document nor the information herein are to be reproduced, either in part or in whole, except as specifically authorized by STERIS Corporation.

SHEET
8 OF 9

DOSING STATION



NOTES:

(A) AMBIENT TEMPERATURE SHALL NOT EXCEED 30°C FOR CHEMICAL STORAGE.

		W/PROLYSTICA AUTO PAA	W/ENDOCLEAN HLD
CHEMICAL (CH)	DETERGENT CONSUMPTION PER CYCLE	16 ml at 0.8 ml/L	16 ml at 0.8 ml/L
	DISINFECTANT CONSUMPTION PER CYCLE	TBD	TBD

	T I T L E	EQUIPMENT DRAWING OF RELIANCE PTX ENDOSCOPE PROCESSING SYSTEM					STATE Released
		ELECTRIC HEATED, VENTED					REVISION: B
		SIZE: A	SCALE: 3/128		DRAWN BY: Mario Grondin	DRAWING NUMBER: 10203166	PART NUMBER: 10203166

This document contains confidential and proprietary information of STERIS Corporation. Neither this document nor the information herein are to be reproduced, either in part or in whole, except as specifically authorized by STERIS Corporation.